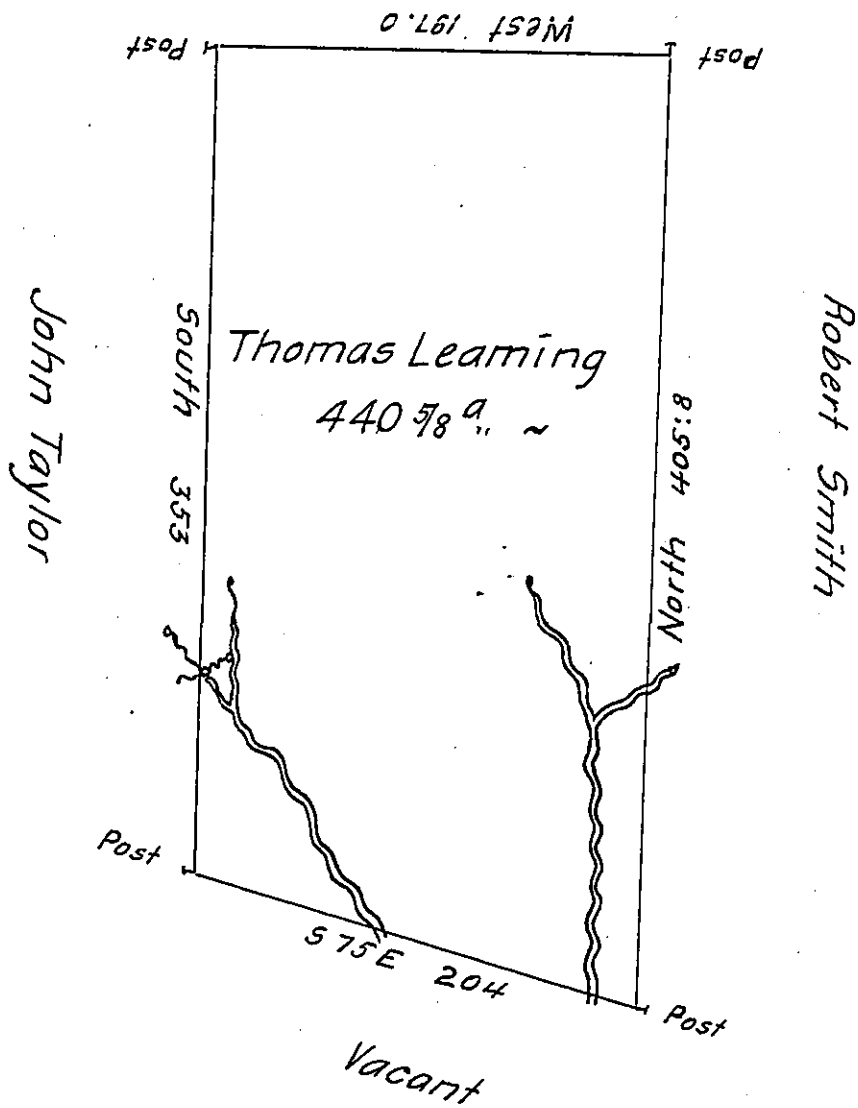


Scheyler Bradford



A Draught of a Tract of Land on the Head Waters of  
 Conemaugh in the County of Bedford Containing four hundred and  
 forty Acres & the Usual Allowance of six per Cent for Roads.  
 Surveyed for Thomas Learning the 28<sup>th</sup> Day of September 1785.  
 In Pursuance of a Warrant Dated July 1<sup>st</sup> 1784.  
 To John Lukens Esq<sup>r</sup> S.G.

George Woods D.S.

IN TESTIMONY that the above is a copy of the original remaining on file in  
 the Department of Internal Affairs of Pennsylvania, made  
 conformably to an Act of Assembly approved the 16th day of  
 February, 1833, I have hereunto set my Hand and caused  
 the Seal of said Department to be affixed at Harrisburg,  
 this twelfth day of September 1905

*Isaac B. Brown*  
 Secretary of Internal Affairs.